

# MC285C-3



# Mini Crane

# MC285C-3

## Specifications

Capacity	Maximum	2.82 t x 1.4m
Working radius	Maximum	8.205m x 150kg
Lifting height	Maximum	8.7m x 550kg
Dimensions	MC285CWM-3 MC285CWME-3	2800mm x 750mm x 1470mm 3285mm x 750mm x 1470mm
Weight	MC285CWM-3 MC285CWME-3 Hook block weight	1990kg (2160kg with auxiliary winch) 2160kg (2330kg with auxiliary winch) 30kg
Hook speed	Maximum	9.3m / min. (4 falls, 4th layer)
Single line speed	Maximum	37.2m / min. (4th layer)
Hoist rope	Type	IWRC 6 x Fi (29) 0/0, Ø 7mm x 48m
Telescopic system	Boom length Telescoping speed Boom type	2.535m - 8.575m 6.04m / 22 sec. Fully automatic 5 section pentagonal telescopic boom
Boom hoist system	Hoist angle / speed	0° - 80° / 14 sec.
Slew system	Slew angle / speed	360° continuous / 0.88 rpm
Outrigger system	Type  Maximum outriggers	1st stage with flexible stay damper, 2nd stage manual pullout, hydraulic cylinder direct acting type (Length) 4782mm x (Front) 4718mm x (Rear) 3990mm
Traction system	Drive Travel speed Gradability Ground length x width Ground pressure	Hydraulic motor driven, stepless speed changer 0 - 2.2 km/h 20° 975mm x 200mm 0.510kgf / cm <sup>2</sup> (0.554 kgf/cm <sup>2</sup> CWME)
Engine	Model Type Rated output Starting method Fuel tank capacity	YANMAR 2TNV70-NMBA 2 cylinder, water cooled diesel 7.4 kW / 2500 rpm Electric Diesel / 12L
Electric motor (Optional)	Type Size	Fully enclosed fan cooled motor 5.5 kW 3-phase 380V
Safe load indicator	Made specifically for Maeda Mini Cranes with a fully programmable working envelope	
Standard equipment	Overwind protection, Hour meter, HBC radio remote control, Black rubber tracks, Hydraulic safety valves, Tilt alarm, EMO switch, Programmable Moment limiter, Working limit settings, Working status lamp, Load indicator, Wire rope latch, Data logger, Crane and outrigger interlock system, 4-fall / 2-fall hook block.	
Optional equipment	White Rubber Tracks, Single Fall Hook, 850kg Searcher Hook, 900kg Auxiliary Winch, Engine Heater, Hydraulic Heater, Spark Arrestor	



[www.kranlyft.com](http://www.kranlyft.com)



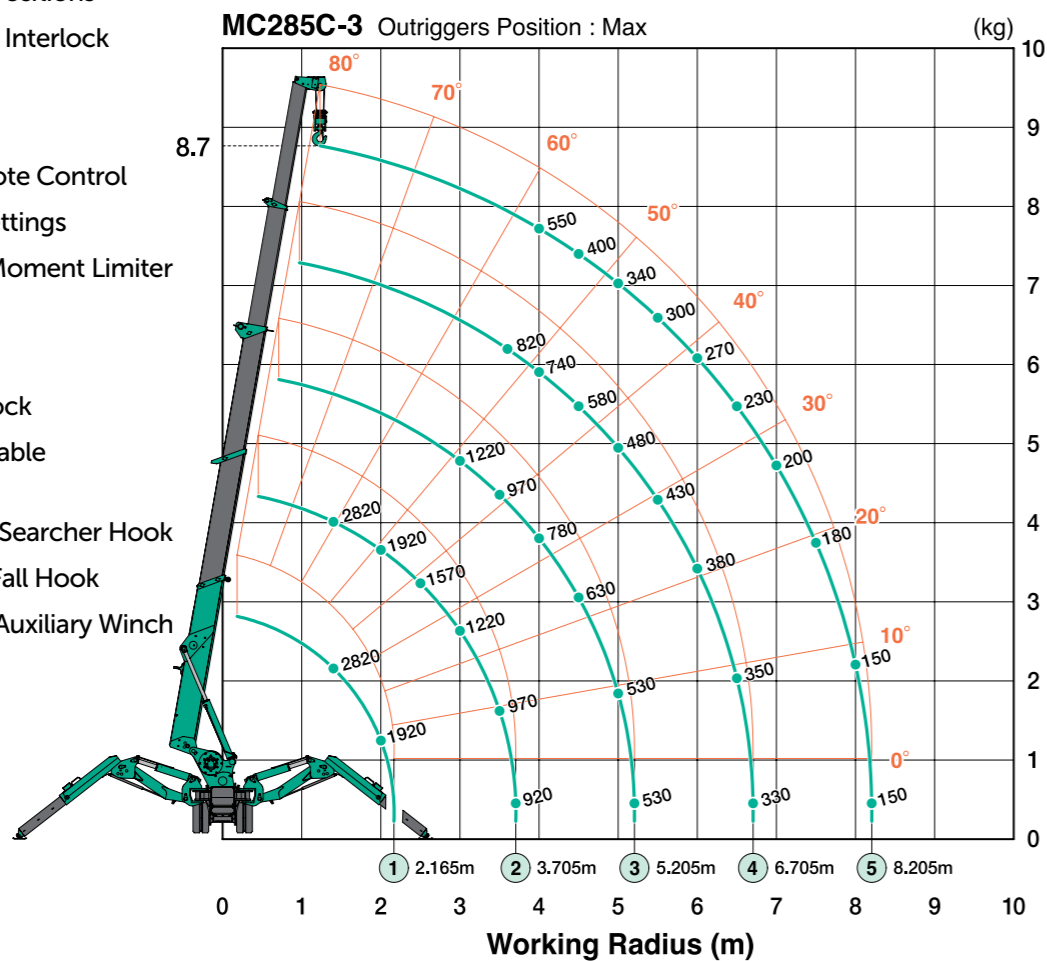
[www.kranlyft.com](http://www.kranlyft.com)

The MC285C-3 makes our most popular model of mini cranes even more versatile. The multi position outrigger system is controlled by moment limiter which means operators can set the outriggers in different positions and still lift a load according to the maximum rated total load between outriggers that are fully extended.

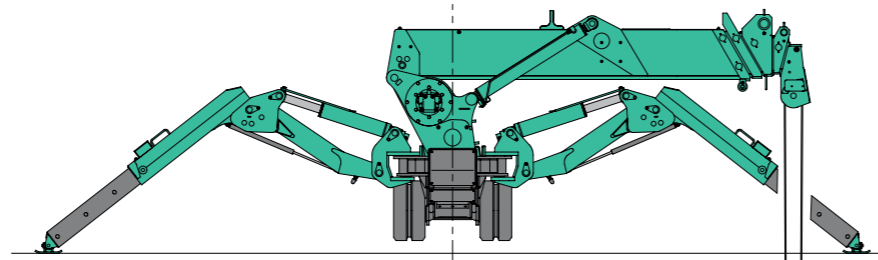
New features to the MC285C-3 model also include slew angle limit setting, new 7" display, HBC radio remote control and detachable electric motor.

The Yanmar diesel engine meets requirements for the new gas emission standards of EU Stage V which is valid from January 2019.

- 2.82t Max Capacity
- 8.7m Max Lifting Height
- Multi Outrigger Positions
- Crane/Outrigger Interlock System
- 7" Display
- HBC Radio Remote Control
- Working Limit Settings
- Programmable Moment Limiter
- Data Logger
- Tilt Alarm
- 4/2 Fall Hook Block
- Optional Detachable Electric Motor
- Optional 850kg Searcher Hook
- Optional Single Fall Hook
- Optional 900kg Auxiliary Winch



This working range chart shows total rated load including boom deflection.



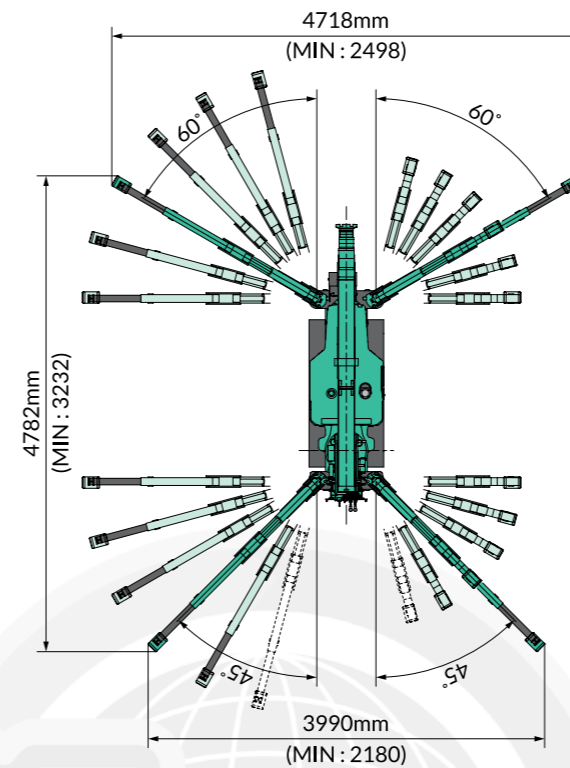
4 Fall  
10.1m

2 Fall  
20.2m

Single Fall  
40.4m

Aux winch  
(Single fall)  
100.0m

### Outrigger Footprints



- Multi Outrigger Position Controlled by Moment Limiter

Total rated load Outriggers at Maximum position							
2.535m/4.075m boom		5.575m boom		7.075m boom		8.575m boom	
Working radius (m)	Total rated load(kg)	Working radius (m)	Total rated load(kg)	Working radius (m)	Total rated load(kg)	Working radius (m)	Total rated load(kg)
< 1.4	2820	< 3.0	1220	< 3.6	820	< 4.0	550
1.5	2520	3.5	970	4.0	740	4.5	400
2.0	1920	4.0	780	4.5	580	5.0	340
2.5	1570	4.5	630	5.0	480	5.5	300
3.0	1220	5.0	530	5.5	430	6.0	270
3.5	970	5.205	530	6.0	380	6.5	230
3.705	920			6.5	350	7.0	200
				6.705	330	7.5	180
						8.0	150
						8.205	150

Total rated load Outriggers at any other position							
2.535m/4.075m boom		5.575m boom		7.075m boom		8.575m boom	
Working radius (m)	Total rated load(kg)	Working radius (m)	Total rated load(kg)	Working radius (m)	Total rated load(kg)	Working radius (m)	Total rated load(kg)
< 1.5	1720	< 3.0	510	< 3.6	400	< 4.0	330
2.0	1070	3.5	410	4.0	330	4.5	280
2.5	630	4.0	330	4.5	280	5.0	230
3.0	520	4.5	280	5.0	230	5.5	180
3.5	430	5.0	230	5.5	180	6.0	160
3.705	350	5.205	200	6.0	160	6.5	150
				6.5	150	7.0	100
				6.705	140	7.5	80
						8.0	70
						8.205	60

- When using two fall or single fall hooks, use the four fall Total Rated Load Charts but with a maximum load of: Two Fall 1410kg, Single Fall 710kg.

