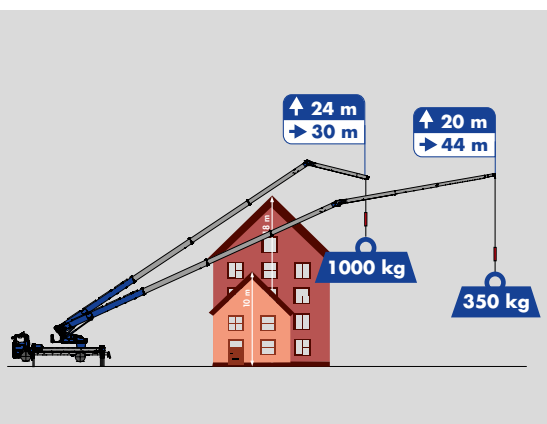


**K1003 RSX**



- Hook Height 52.75 m/Boom Length 54 m
- Max. Capacity 6,000 kg
- 30 m Working Radius with 1,000 kg
- Hydraulically Extending Jib

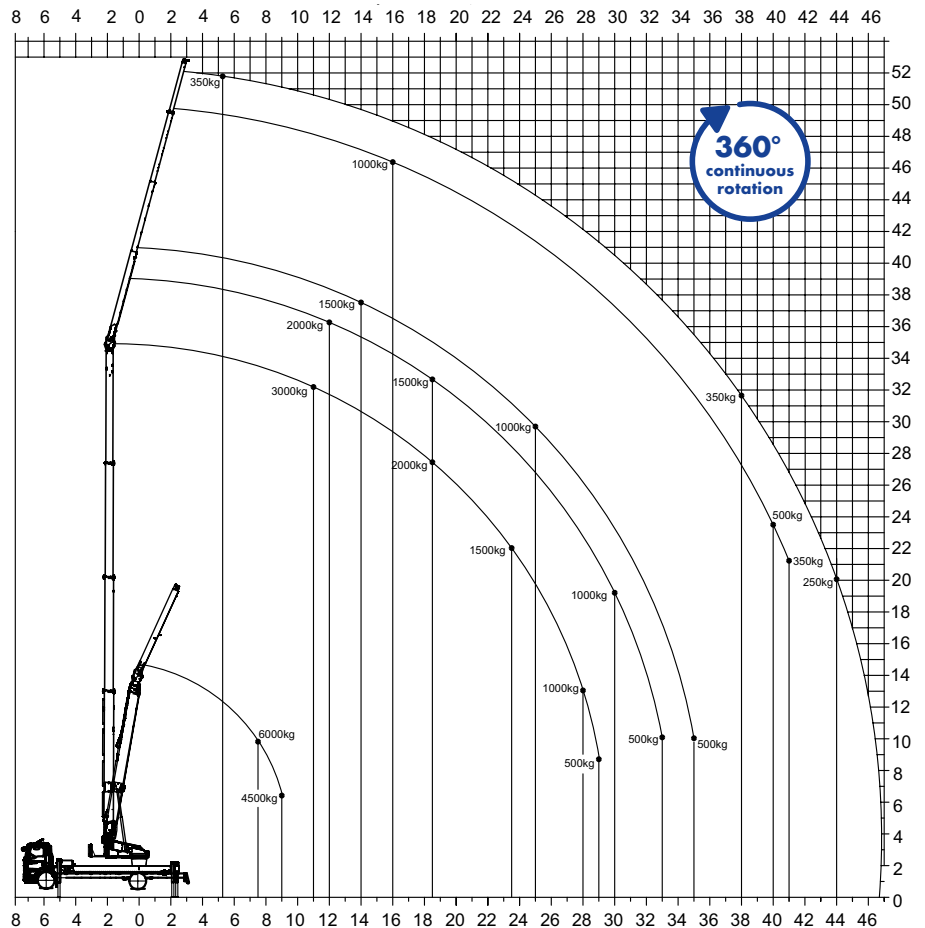


# K1003 RSX

## Equipment

 TFR Boom system	 V-Outriggers	 Automatic Levelling
 Hydraulic, telescopic fly jib	 Twin Luffing Cylinders	 Double Derricking Cylinders
 Telescopic winch	 Continuous Rotation	 Crane control system
 XL Radio remote control	 Drive concept	 Extendable counterweight
 Full panelling	 Personal Safety Mode	 Hybrid drive (opt.)
 Working Platform (opt.)	 Customized Equipment (opt.)	 Fixed Hook Lifting (opt.)

## Working Range Diagram



## Technical specifications

Hook load (stand./opt.)	3.0/6.0 t
Hook height	52.75 m
Boom Length	54.00 m
Outrigger width (min.)	2.94 m
Outrigger width (max.)	5.94 m
Winch Capacity	3,000 kg
Boom (3,000 kg - 1,000 kg)	6.61 - 15.45 m

Extension 3 (350 kg)	18.39 m
Truck* Total weight (min.)	≥ 22.00 t

\*depending on truck type

## Working Range

Load	Working Range	Height
3,000 kg	11.00 m	32.00 m
2,000 kg	18.50 m	27.50 m
1,000 kg	30.00 m	19.00 m
250 kg	44.00 m	20.00 m

## Working Range 6t Capacity\*

Load	Working Range	Height
6,000 kg	7.50 m	10.00 m
4,500 kg	9.00 m	6.50 m

\*with 2-fall instead



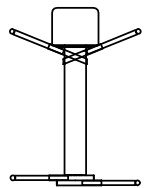
### Personal Safety

- The K1003 RSX is prepared for personal safety according to local standards.



### Fixed Hook Lifting

- The K1003 RSX can be equipped with optional mounting hook
- The mounting hook enables extremely precise material transport. Area of use e. g. glass mounting with a vacuum lifter.



Kranlyft UK Ltd, Unit 1, IO Centre, Cabot Park, Avonmouth, Bristol, BS11 0QL  
 Tel: +44 (0)117 982 6661 Fax: +44 (0)117 982 9173  
 info@kranlyft.co.uk



Fibervägen 1, SE-435 33 Mölnlycke  
 Tel: +46 31 80 70 00 Fax: +46 31 15 97 72  
 info@kranlyft.com