

TRUCK CRANE

TS-75M
TS-75ML

JAPANESE SPECIFICATIONS

TS

OUTLINE	SPEC. NO.
Max. total rated load 4.9 ton	TS-75M-1-00001
Max. total rated load 7.0 ton	TS-75M-1-00002

Control No. JA-04

TOTAL RATED LOADS

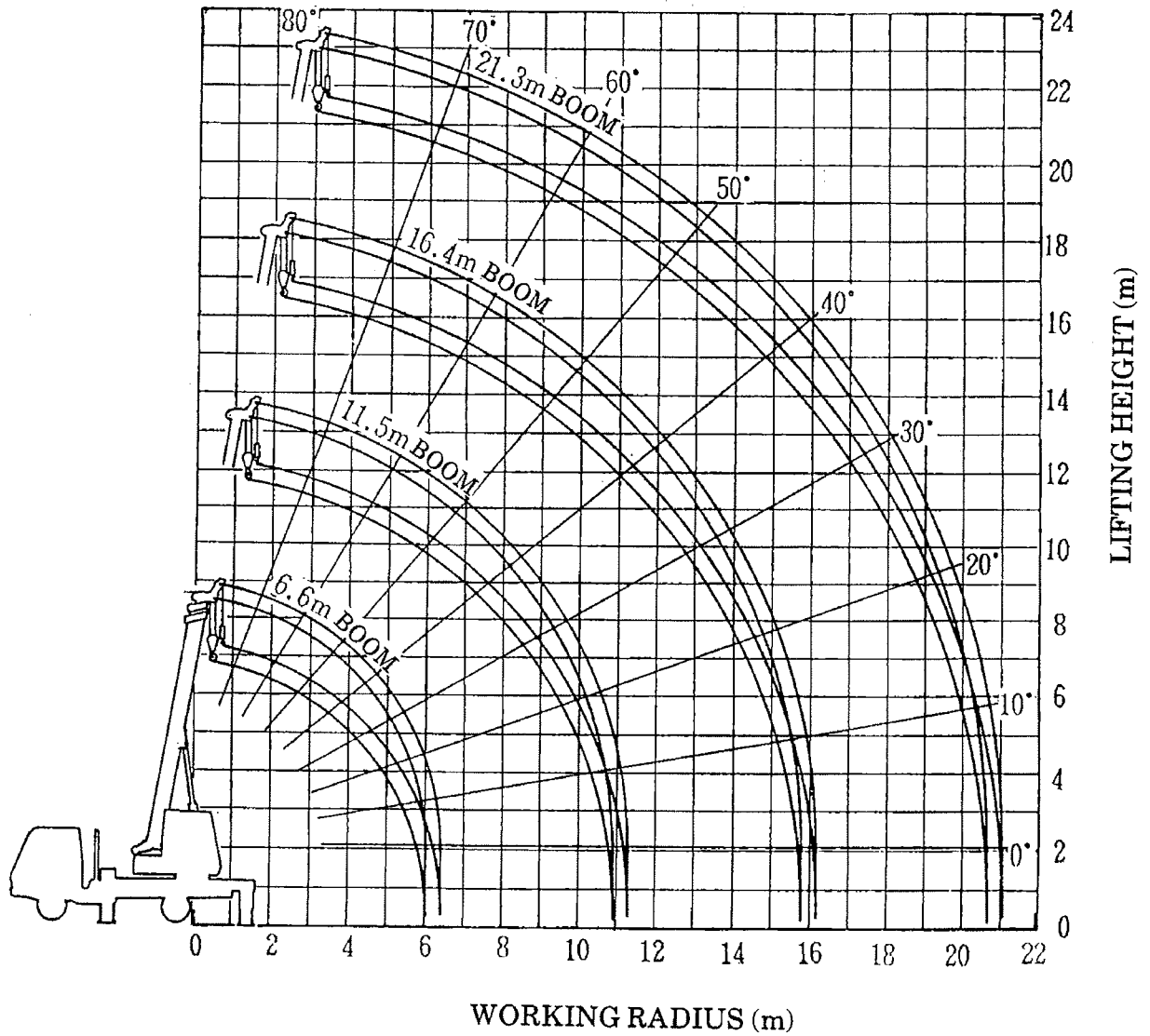
Unit : ton

· Outriggers fully extended + Front jack (360°) · Outriggers fully extended (Over rear · Over sides)				
A \ B (m)	6.6 m	11.5 m	16.4 m	21.3 m
2.0	(4.90) 7.00			
2.5	(4.90) 7.00			
3.0	(4.90) 6.10	4.90		
3.5	(4.90) 5.30	4.90	3.90	
4.0	4.55	4.50	3.60	
4.5	3.75	3.85	3.30	2.00
5.0	3.15	3.25	3.05	2.00
5.5	2.70	2.80	2.80	1.85
6.0	2.35	2.45	2.45	1.70
7.0		1.90	1.95	1.45
8.0		1.55	1.55	1.25
9.0		1.25	1.30	1.10
10.0		1.05	1.10	0.95
10.9		0.90	0.90	0.90
12.0			0.75	0.78
13.0			0.65	0.70
14.0			0.55	0.60
15.0			0.45	0.52
15.8			0.40	0.45
17.0				0.37
18.0				0.31
19.0				0.25
20.0				0.20
20.5				0.17

· Outriggers middle extended (360°) · Outriggers fully extended (Over front)				
A \ B (m)	6.6 m	11.5 m	16.4 m	21.3 m
2.0	(4.90) 7.00			
2.5	(4.90) 7.00			
3.0	(4.90) 5.20	4.90		
3.5	3.80	3.90	3.50	
4.0	2.90	3.00	2.80	
4.5	2.20	2.40	2.40	2.00
5.0	1.80	1.95	1.95	1.80
5.5	1.40	1.60	1.60	1.65
6.0	1.10	1.35	1.35	1.40
7.0		0.95	0.95	1.00
8.0		0.70	0.70	0.75
9.0		0.50	0.50	0.55
10.0		0.35	0.35	0.40
10.9		0.25	0.25	0.30

A = Boom length
B = Working radius

WORKING RADIUS - LIFTING HEIGHT



NOTES:

1. The deflection of the boom is not incorporated in the figure above.
2. The above chart is for the case where the outriggers are fully extended and where the front jack are used (over 360°).

DIMENSIONS (1/100)

May differ according to type of mounting carrier.

